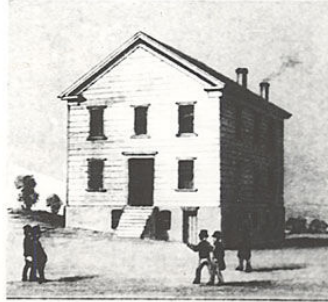
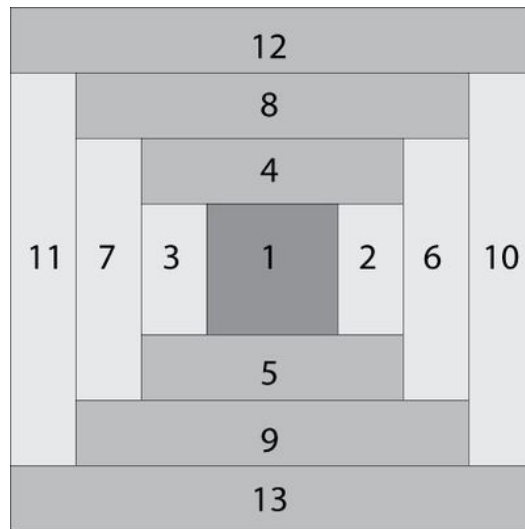


*Evening Star Quilt Guild  
2014 Block of the Month*

*"It All Began With Essie..."*



We pick up the story of Edmund and Essie Greene in the year 1820 and find that many things have changed in the 10 years since they came to the Indiana Territory. Indiana celebrated Statehood in 1816 which brought much joy to the Greene family as well as the addition of two more children, Edmund Jr. born in 1812 and Penelope born in 1814. Their farm was thriving and the county was growing. Then in 1820 the county seat was moved from Pendleton to Andersontown and the community celebrated the building of the first County Courthouse. Essie was excited to know that this part of the country was becoming more civilized and that her children would benefit from this. As she and her husband stood on the steps of the new Courthouse her mind filled with the idea of a way to celebrate this milestone and thus her next quilt block: Courthouse Steps.



*Essie used scraps from her sewing bag to complete this quilt. Sewing for a family of five meant her bag was usually full and she had much to choose from. Essie would have used light and dark strips to complete this quilt to create the look of steps leading up to the Courthouse which is represented by the center square.*

Linda Lupton and Irene Silva have made lovely samples for this month and they are pictured below. The choices are endless and fun! Choose your setting and sew away! Enjoy and bring back for next month!



Irene Silva – 8" Blocks



Linda Lupton – 4" Blocks

As you can see, Irene chose a 12 block setting with two borders for her sample and Linda chose a 6 block setting with two borders for her sample. You will notice that Linda alternated the color of her inner border strips. Thanks so much ladies! Below are listed the strip widths to cut for a 12" – 8" – 6" and 4" Block. Border widths will be your choice.

12" Finished Block

- #1 - Center Square – 3 ½"
  - #2 – 2" x 3 ½"
  - #3 – 2" x 3 ½"
  - #4 – 2" x 6 ½"
  - #5 – 2" x 6 ½"
  - #6 – 2" x 6 ½"
  - #7 – 2" x 6 ½"
  - #8 – 2" x 9 ½"
  - #9 – 2" x 9 ½"
  - #10 – 2" x 9 ½"
  - #11 – 2" x 9 ½"
  - #12 – 2" x 12 ½"
  - #13 – 2" x 12 ½"
- Square to 12 ½" unfinished.

8" Finished Block

- #1 - Center Square – 2 ½"
  - #2 – 1 ½" x 2 ½"
  - #3 – 1 ½" x 2 ½"
  - #4 – 1 ½" x 4 ½"
  - #5 – 1 ½" x 4 ½"
  - #6 – 1 ½" x 4 ½"
  - #7 – 1 ½" x 4 ½"
  - #8 – 1 ½" x 6 ½"
  - #9 – 1 ½" x 6 ½"
  - #10 – 1 ½" x 6 ½"
  - #11 – 1 ½" x 6 ½"
  - #12 – 1 ½" x 8 ½"
  - #13 – 1 ½" x 8 ½"
- Square to 8 ½" unfinished.

6" Finished Block

- #1 - Center Square – 2"
  - #2 – 1 ¼" x 2"
  - #3 – 1 ¼" x 2"
  - #4 – 1 ¼" x 3 ½"
  - #5 – 1 ¼" x 3 ½"
  - #6 – 1 ¼" x 3 ½"
  - #7 – 1 ¼" x 3 ½"
  - #8 – 1 ¼" x 5"
  - #9 – 1 ¼" x 5"
  - #10 – 1 ¼" x 5"
  - #11 – 1 ¼" x 5"
  - #12 – 1 ¼" x 6 ½"
  - #13 – 1 ¼" x 6 ½"
- Square to 6 ½" unfinished.

4" Finished Block

- #1 – Center Square – 1 ½"
- #2 – 1" x 1 ½"
- #3 – 1" x 1 ½"
- #4 – 1" x 2 ½"
- #5 – 1" x 2 ½"

- #6 – 1" x 2 ½"
- #7 – 1" x 2 ½"
- #8 – 1" x 3 ½"
- #9 – 1" x 3 ½"
- #10 – 1" x 3 ½"

- #11 – 1" x 3 ½"
- #12 – 1" x 4 ½"
- #13 – 1" x 4 ½"

Square to 4 ½" unfinished.